



Searcher

Nova Scotia



Powering
the Future

searcherseismic.com

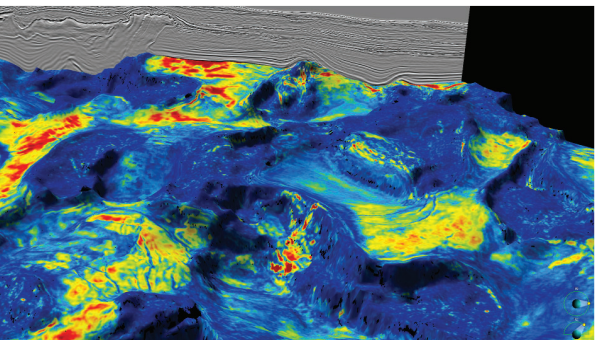
CA

tia

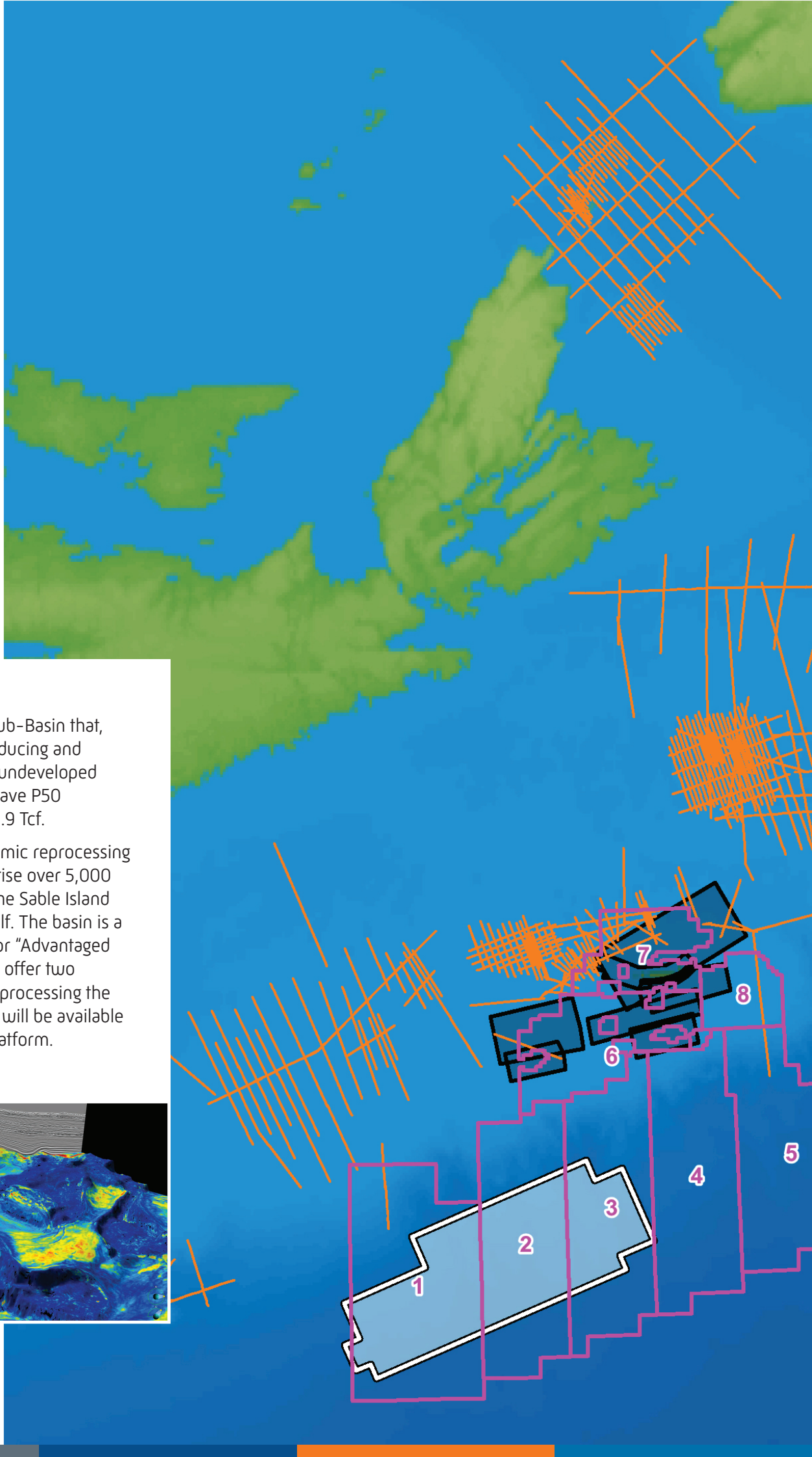
D

Including the prolific Sable Sub-Basin that, in addition to the prolific producing and produced fields, contains 15 undeveloped Significant Discoveries that have P50 recoverable gas reserves of 1.9 Tcf.

The new multi-client 3D seismic reprocessing projects (black cubes) comprise over 5,000 km² of 3D data focusing on the Sable Island Gas fields on the Scotian Shelf. The basin is a great example of exploring for "Advantaged Hydrocarbons" and Searcher offer two products. Searcher will be reprocessing the 3D datasets and the vintages will be available on the Searcher sAlismic© platform.



dataset.





sales@searcherseismic.com | searcherseismic.com
Unit 6, Albion House, High Street, Woking, GU21 6BG, United Kingdom.

